

 | Brochure

# Aspen Schedule Explorer™



Aspen Schedule Explorer provides your supply chain with a live web-based view into the latest published production schedules from Aspen Plant Scheduler™. Advanced communication and visibility capabilities, in conjunction with AspenTech's high fidelity scheduling and optimization, increase productivity and enable improved supply chain and operations execution. Aspen Schedule Explorer's common, collaborative hub strengthens cross-functional alignment between stakeholders, while an intuitive interface provides users with the visibility required in today's complex, ever-changing manufacturing environments.

Foster collaboration between your supply chain and operations team members with Aspen Schedule Explorer:

1. Activity-based conversations provide clarity and context by linking directly to production activities, reducing miscommunications and misunderstandings.
2. Intuitive and streamlined processes break down communication barriers, increasing personal and team productivity as well as production efficiency and throughput.

3. Real-time visibility to relevant decision-making information coupled with activity flagging allows for a proactive approach to managing potential operational disruptions.
4. A schedule historian captures and protects internal operational knowledge to improve processes, increase user productivity and retain data for mining when needed.

### **The Challenge: A World of Increasing Complexity**

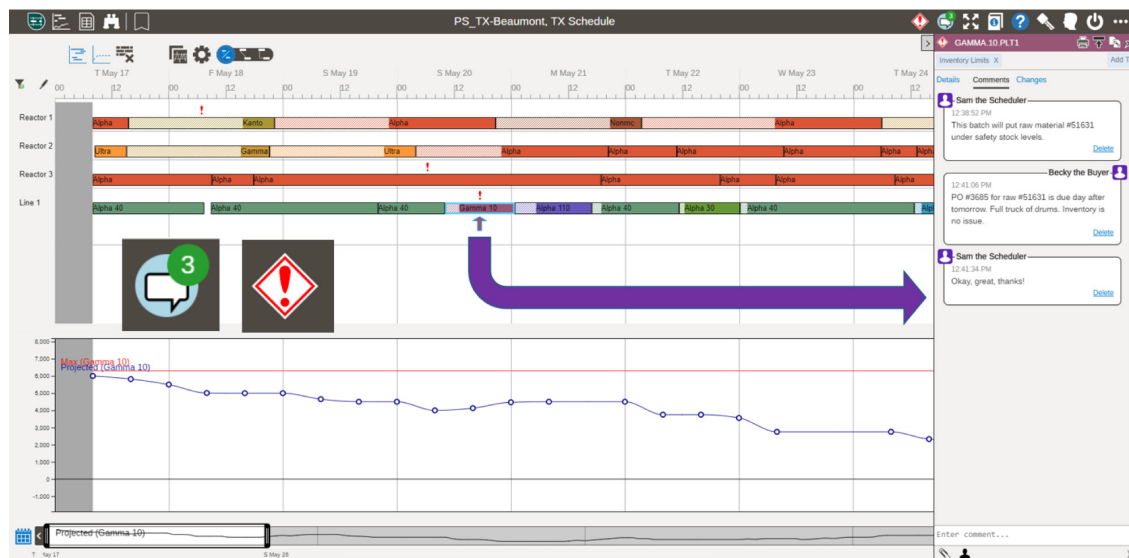
Complexity, both organizational and demand-driven, has increased across the spectrum of process manufacturers. Knowledge is often siloed, difficult to access and challenging to incorporate in timely decision-making processes. Supply chain and manufacturing execution success is highly dependent on this knowledge as well as the skills of a demographically shifting workforce. Managing this complexity with the disparate tools in common use is nearly impossible, with supply chain and manufacturing execution processes devolving into a reactive approach that cannot easily and systematically capture vital knowledge, troubleshoot problems, or avoid potential pitfalls.

## The AspenTech Solution - Improved Execution Through Collaboration and Communication

Aspen Schedule Explorer breaks down the functional barriers between stakeholders such as procurement, supply chain, operations and plant management. Removing these barriers helps close the gap between sales and operations planning and manufacturing, aligning actual execution to goals. Aspen Schedule Explorer's intuitive web interface provides a common collaborative hub that promotes flawless operational execution by providing teams with quick and easy visibility to the information necessary to make proactive and informed decisions

### Conversations Tied to Your Production Activities

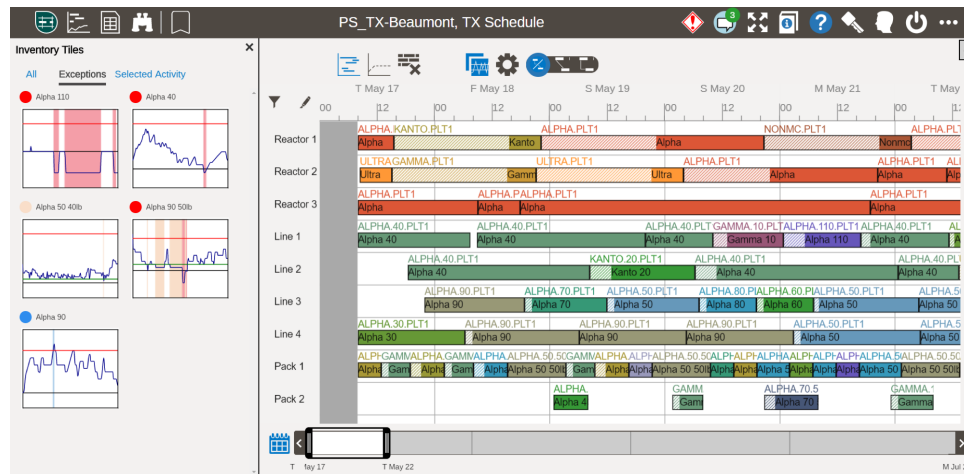
The foundation of Aspen Schedule Explorer's powerful collaboration and knowledge management capabilities resides in activity-based conversations. No more email misunderstandings, organizing important institutional knowledge in disparate folders or reestablishing the context of all your discussions. Conversations are accessible by all stakeholders and easily searchable, encouraging teamwork and accountability as well as the free flow of information.



Improve precision, clarity, organization and searchability of your communications with conversations tied directly to production activities.

## Stakeholder Visibility: Anytime, Anywhere Access

Aspen Schedule Explorer allows for instantaneous access to the latest versions of the schedule and inventory projections, ensuring they are always readily available. Flagging of incidents and activities provides real-time visibility to where attention and collaboration is needed most. No longer will a scheduler, buyer, unit supervisor, or operator lack the information necessary to make correct decisions or operate efficiently and safely.



See critical inventories that will require attention to avoid production disruptions.

## Schedule Historian: Archive, Protect and Use Your Institutional Knowledge

Aspen Schedule Explorer includes an intuitive and powerful historian which provides the ability to search and review previous versions of the schedule, revealing the context that led to certain decisions and actions. Access historical conversations, flagging of incidents, attachments and valuable information to gain history, context and visibility to past decision making, as well as the data to improve decisions and processes in the future.

The screenshot shows the 'Archived' section of Aspen Schedule Explorer. It features a table with columns for 'Model Name', 'Published Date', and 'Details' (including 'Start Date' and 'End Date'). The table lists several historical schedules, all of which are 'PSPOLY' models published in 2019.

	Model Name	Published Date	Details	
		Date	Start Date	End Date
<input type="checkbox"/>	PSPOLY	1/31/2019, 3:06:48 PM	3/1/2019, 8:00:00 AM	4/30/2019, 8:00:00 AM
<input type="checkbox"/>	PSPOLY	1/31/2019, 3:13:55 PM	3/1/2019, 8:00:00 AM	4/30/2019, 8:00:00 AM
<input type="checkbox"/>	PSPOLY	1/31/2019, 3:19:52 PM	3/1/2019, 8:00:00 AM	4/30/2019, 8:00:00 AM
<input type="checkbox"/>	PSPOLY	2/1/2019, 10:16:13 AM	3/1/2019, 8:00:00 AM	4/30/2019, 8:00:00 AM
<input type="checkbox"/>	PSPOLY	2/5/2019, 5:02:31 PM	3/1/2019, 8:00:00 AM	6/21/2019, 8:00:00 AM

Searchable historical schedules and embedded conversations provides context for ever-changing supply chain and operational decisions and actions.



# Enable flawless operational execution by aligning teams to allow supply chain and operations to communicate and make proactive decisions.

## Intuitive, Searchable, Powerful.

Boost your personnel's productivity via a modern HTML5 tablet-friendly user interface that makes your organization's key information accessible anywhere, anytime. Configurable views allow for the adaptability required to fit an organization's unique business needs, enabling users to view relevant information without having to navigate disparate data sources. Organize daily and weekly operations team meetings around the tasks crucial to meeting your goals with the ability to quickly search, sort and export reports.

The screenshot displays a mobile application interface for 'PS\_TX-Beaumont, TX Schedule'. The interface is divided into three main sections: Filters, Results, and Details. The Filters section on the left includes search fields for 'Search text', 'Search for' (set to 'Activities with comments'), and 'Authors' (with 'Scheduler' entered). It also has 'Clear' and 'Remove' buttons. Below this is a 'Tagged Users' section with an input field and 'Add', 'Clear', and 'Remove' buttons. A bottom navigation bar shows 'Facilities', 'Materials', 'Time Range', 'Activity Details', and 'Tags'. The Results section in the center shows a list of activities sorted by 'Activity Start Time'. The list includes items like 'REAC2 - ULTRA.PLT1', 'REAC1 - KANTO.PLT1', 'REAC1 - ALPHA.PLT1', 'REAC2 - ALPHA.PLT1', 'LINE1 - GAMMA.10.PLT1', 'PACK1 - ALPHA.50.40LB.PLT1', 'LINE1 - ALPHA.40.PLT1', 'PACK2 - ALPHA.90.50LB.PLT1', 'PACK2 - ALPHA.20.40LB.PLT1', and 'REAC1 - ALPHA.PLT1'. The Details section on the right for 'ULTRA.PLT1' shows fields for 'Material: Ultra', 'Operation: Ultra Bom 1 on Reactor 2', 'Bill of Material: Ultra Bom 1', 'Routing: Ultra on Reactor 2', 'Facility: Reactor 2', 'Start: 5/17/2018, 8:22:45 AM', 'End: 5/17/2018, 3:05:21 PM', 'Amount: 550', 'Duration: 06:42', 'Setup Time: 00:00', 'Lead Time: 00:00', 'Target Inventory: 0', and 'Activity #: 124'. It also has links for 'Pegged Breakdown' and 'Bill of Materials'.

Improve productivity by having the relevant data available when and where it is needed.

<h2>Functions</h2>	<h2>Benefits</h2>
<h3>Manufacturing Schedule Visibility</h3> <ul style="list-style-type: none"> <li>▪ Intuitive HTML5 tablet-friendly user interface</li> <li>▪ Ensure everyone has the most up-to-date schedule and related information and reports</li> <li>▪ Publish schedule updates from Aspen Plant Scheduler to Aspen Schedule Explorer with one click</li> <li>▪ Instantaneous visibility to (potential) incidents using flagging capability</li> <li>▪ Track material flow and timing dependencies</li> <li>▪ Create saved views for yourself or your team</li> </ul>	<ul style="list-style-type: none"> <li>▪ Centralized information available anywhere, anytime</li> <li>▪ Aligns schedulers, operations, planners, management and other key stakeholders in a common environment</li> <li>▪ No delay between schedule changes and rollout to operations</li> <li>▪ Focus attention and efforts where they are needed most—tackle competing and conflicting priorities</li> <li>▪ Easily see where materials are coming from and where they are going next</li> <li>▪ Reduce the amount of time spent searching for information that is most relevant to you</li> </ul>
<h3>Activity-Based Conversations</h3> <ul style="list-style-type: none"> <li>▪ Tie conversations directly to the activity in question</li> <li>▪ Conversations take place in a common, real-time, searchable hub</li> <li>▪ Include attachments and hyperlinks to other web applications</li> <li>▪ Email conversations to anyone in the company</li> <li>▪ Eliminate confusion about which activity is being discussed</li> <li>▪ Add searchable tags to any activity</li> </ul>	<ul style="list-style-type: none"> <li>▪ Improves visibility and accountability</li> <li>▪ Easily prioritize daily operations discussions</li> <li>▪ Reduce the risk of mistakes caused by incorrectly transcribed information</li> <li>▪ Lessen email clutter</li> <li>▪ Quickly identify and address potential issues and safety concerns</li> <li>▪ Quickly find production status, potential issues, or other activity-specific information</li> </ul>
<h3>Schedule Historian</h3> <ul style="list-style-type: none"> <li>▪ Maintain an archive of previous schedule versions along with evolving conversations for future reference</li> <li>▪ Use previous schedule versions to rapidly research issues and customer complaints</li> <li>▪ Search capabilities make it easy to find key activities and information</li> <li>▪ Track changes made to activities between published schedules</li> </ul>	<ul style="list-style-type: none"> <li>▪ Institutionalize critical and nuanced scheduling and operational knowledge</li> <li>▪ Create a searchable log of scheduling and operational decisions that were made and the context in which they were made</li> <li>▪ Store data for future applications and data mining</li> <li>▪ Protect knowledge and reduce the time needed to investigate past incidents</li> <li>▪ Analyze schedule changes for potential business improvements</li> </ul>
<h3>Reporting</h3> <ul style="list-style-type: none"> <li>▪ View the schedule in a tabular report—helpful for users who aren't used to Gantt charts</li> <li>▪ Publish reports-related data from Aspen Plant Scheduler to Aspen Schedule Explorer where it can be readily viewed and manipulated</li> <li>▪ Print reports or export them to a spreadsheet</li> </ul>	<ul style="list-style-type: none"> <li>▪ Structured, efficient and focused daily operations team meetings</li> <li>▪ Flexible user interface makes it easy for users to see what is important to them</li> <li>▪ Adaptability to fit business needs</li> </ul>

AspenTech is a leading software supplier for optimizing asset performance. Our products thrive in complex, industrial environments where it is critical to optimize the asset design, operation and maintenance lifecycle. AspenTech uniquely combines decades of process modeling expertise with machine learning. Our purpose-built software platform automates knowledge work and builds sustainable competitive advantage by delivering high returns over the entire asset lifecycle. As a result, companies in capital-intensive industries can maximize uptime and push the limits of performance, running their assets faster, safer, longer and greener.

[www.aspentech.com](http://www.aspentech.com)

